

285 S8/285 S10

WAD PUNCH SET

- 8 and 10 pcs.
- in black plastic wallet
- for punching of carton, leather, rubber, sealing material and other soft material
- forged, cutting edge hardened and ground
- shaft red coated
- lightly conical inside for easy removal of the cuttings
- high grade steel
- according to DIN 7200, Form A



Code	Number	Contents	Pieces	Weight/g
0285500806000	285 S8	285- 3, 6, 8, 10, 12, 16, 20, 25 mm	1	1475
0285501006000	285 S10	285- 3, 5, 7, 8, 10, 13, 16, 19, 22, 25 mm	1	1775

286-...

BELT PUNCH

- for punching of carton, leather, rubber, sealing material and other soft material
- forged, cutting edge hardened and ground
- shaft red coated
- high grade steel
- according to DIN 7200, Form B



Code	Number	Ø	l/mm	Pieces	Weight/g	Code	Number	Ø	l/mm	Pieces	Weight/g
0286000016000	286-1	1	105	12	20	0286000146000	286-14	14	135	6	195
0286000026000	286-2	2	105	12	20	0286000156000	286-15	15	135	6	200
0286000036000	286-3	3	105	12	25	0286000166000	286-16	16	140	6	260
0286000046000	286-4	4	110	12	35	0286000176000	286-17	17	140	6	270
0286000056000	286-5	5	115	12	40	0286000186000	286-18	18	150	6	320
0286000066000	286-6	6	115	12	45	0286000196000	286-19	19	150	6	365
0286000076000	286-7	7	120	12	60	0286000206000	286-20	20	155	6	410
0286000086000	286-8	8	120	12	75	0286000216000	286-21	21	155	6	440
0286000096000	286-9	9	125	12	100	0286000226000	286-22	22	155	6	490
0286000106000	286-10	10	125	12	115	0286000236000	286-23	23	155	3	490
0286000116000	286-11	11	125	12	150	0286000246000	286-24	24	160	3	550
0286000126000	286-12	12	130	12	180	0286000256000	286-25	25	160	3	550
0286000136000	286-13	13	130	6	185						

400Z-...

NUMBER PUNCH SET

- 9 pcs.
- for driving numbers by impact into steel
- 9 numbers from 0-9
- in stable plastic box
- completely hardened and tempered
- striking heads inductive tempered
- made of hard and tough steel
- according to DIN 1451



Code	Number	Size of letters mm	Shaft size mm	Pieces	Weight/g
0400000020000	400Z-2	2	6×65	1	165
0400000030000	400Z-3	3	6×65	1	170
0400000040000	400Z-4	4	7×65	1	230
0400000050000	400Z-5	5	8×65	1	295
0400000060000	400Z-6	6	9×70	1	400
0400000070000	400Z-7	7	10×75	1	530
0400000080000	400Z-8	8	11×75	1	635
0400000100000	400Z-10	10	12×80	1	820
0400000120000	400Z-12	12	14×80	1	1110
0400000150000	400Z-15	15	16×90	1	1610
0400000200000	400Z-20	20	18×100	1	2205

400B-...

LETTER PUNCH SET

- 27 pcs.
- for driving letters by impact into steel
- 27 capital letters, from A to Z and "&"
- in stable plastic box
- completely hardened and tempered
- striking heads inductive tempered
- made of hard and tough steel
- according to DIN 1451

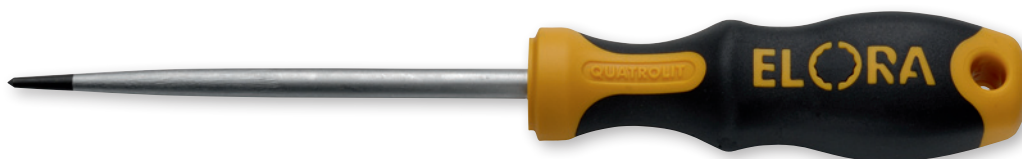


Code	Number	Size of letters mm	Shaft size mm	Pieces	Weight/g
0400010020000	400B-2	2	6x65	1	490
0400010030000	400B-3	3	6x65	1	495
0400010040000	400B-4	4	7x65	1	670
0400010050000	400B-5	5	8x65	1	865
0400010060000	400B-6	6	9x70	1	1180
0400010070000	400B-7	7	10x75	1	1560
0400010080000	400B-8	8	11x75	1	1895
0400010100000	400B-10	10	12x80	1	2440
0400010120000	400B-12	12	14x80	1	4500
0400010150000	400B-15	15	16x90	1	4700
0400010200000	400B-20	20	18x100	1	6590

745

ROUND AWL

- chrome-plated blade
- nonslip QUATROLIT®-2C-handle
- with suspension hole
- special steel

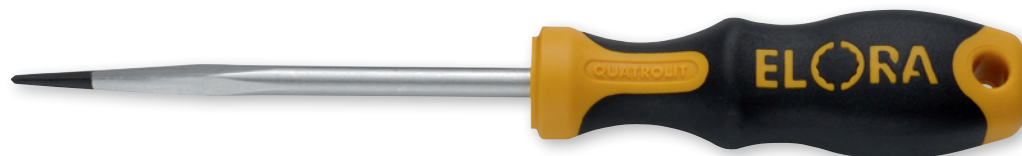


Code	Number	l/mm	Pieces	Weight/g
0745000001000	745	100 x Ø 6	6	75

746

SQUARE AWL

- chrome plated 4 square blade
- nonslip QUATROLIT®-2C-handle
- with suspension hole
- special steel



Code	Number	l/mm	Pieces	Weight/g
0746000001000	746	100 x Ø 6	6	75

You will find revolving punch pliers on page no. 336

